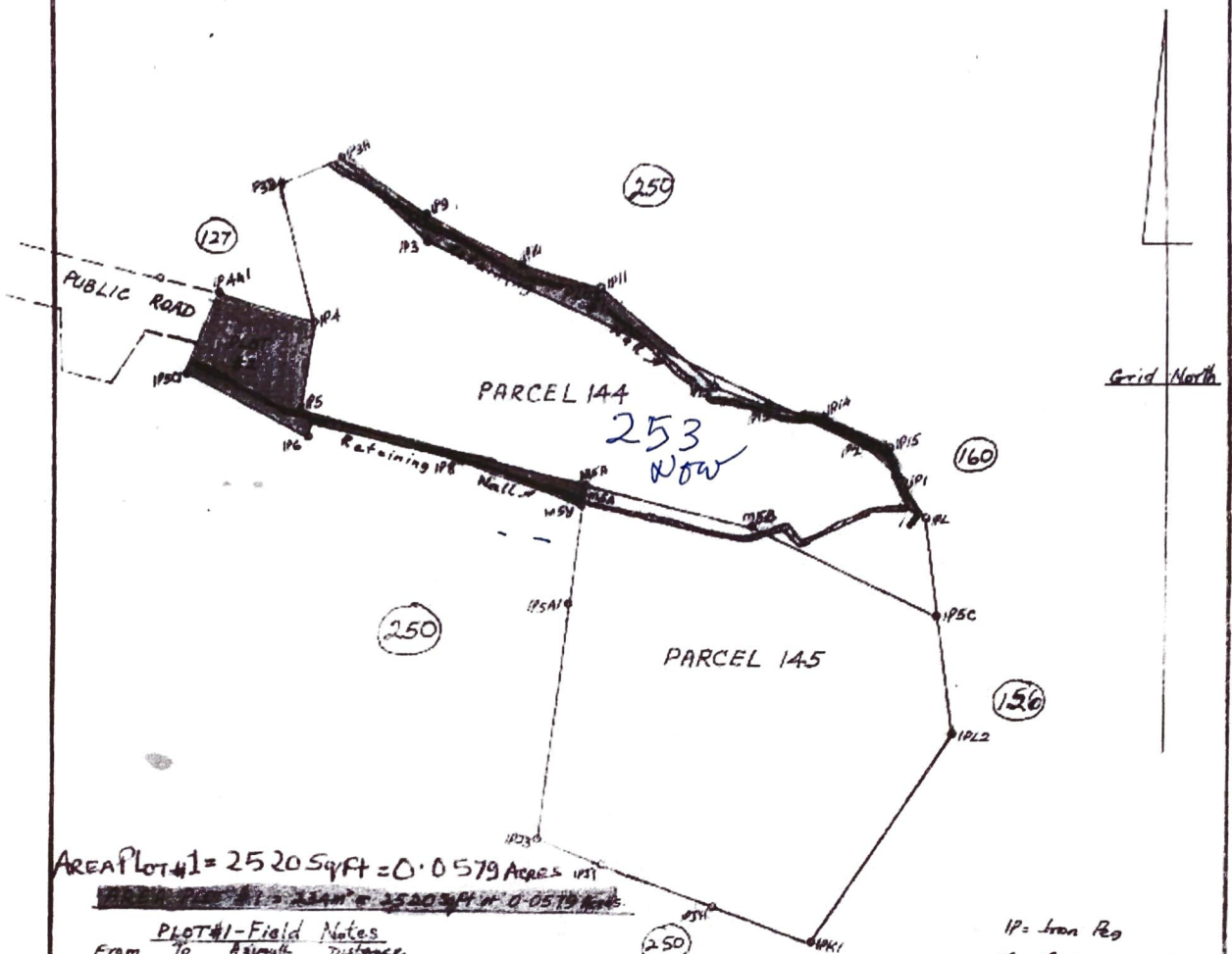


LOCATION - HORSEFORD HILL (FALMOUTH)

Parcel - 253 NOW



AREA PLOT #1 = 2520 Sqft = 0.0579 ACRES

PLOT #1 - Field Notes

From	To	Azimuth	Distance
IP3A	-IP3	133 21 57	22.84
	-IP2	114 42 20	93.06
	-IP1	133 42 13	10.47
	-IP15	334 52 45	1.00
	-IP14	292 05 50	13.66
	-IP13	283 37 15	11.04
	-IP12	291 37 42	11.07
	-IP11	310 32 38	29.21
	-IP10	285 46 46	15.57
	-IP9	298 20 43	20.87
	-IP3A	302 28 24	19.59

AREA OF PLOT #2 = 516m² = 5553 Sqft = 0.1275 ACRES

PLOT #2 - Field Notes

From	To	Azimuth	Distance
M54	-M5A2	06 57 07	1.28
	-M5A1	06 57 07	2.20
	-5X	284 04 28	56.21
	-IP4	08 27 43	17.51
	-IP4A1	287 11 09	19.29
	-IP5C1	203 05 05	17.16
	-IP6	116 49 26	26.73
	-IP7	26 48 21	8.19
	-IP8	103 29 36	29.19
	-M54	110 36 19	24.55

TOTAL EXTRA AREA
750m² or 8073 Sqft or
0.1854 ACS

Scale - 1:1250

Surveyed by me in accordance with the provisions of the Land Surveyors' Ordinance 1975.

Approved

Chief Surveyor

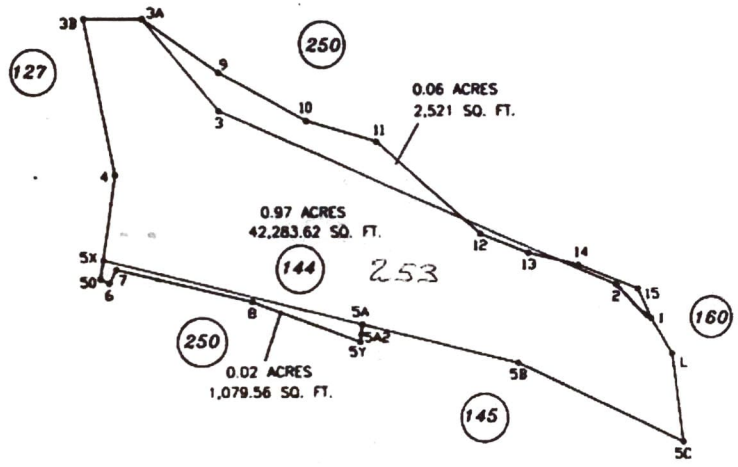
I, **ANTIGUA & BARBUDA** Chief Surveyor of
Do HEREBY CERTIFY that this is a true copy of the filed plan of:

BB/118/05


SHEET NO.34 2282 A. ALTERATION OF PARCEL 144 & 250
 LOCATION: HORSFORD HILL

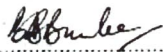


SCALE: 1:5,000



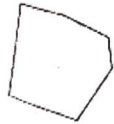
ORIGINAL BDRY					
50-6..108°13'48"	2.07m	3-2..161°20'23"	93.06m	5A-5B...180°00'00"	34.47
6-7..90°07'01"	3.19	2-1..188°59'53"	10.47	5B-5C...191°10'07"	39.01
7-8..256°41'16"	79.19	1-15..21°10'32"	7.00	5C-L...157°31'22"	18.39
8-5Y..187°08'42"	24.55	15-14..137°15'05"	13.66	L-1...167°00'24"	8.71
5Y-5A2..76°13'27"	1.68	14-13..171°31'25"	11.04	1-2...163°56'25"	10.27
5A2-5A..180°00'00"	2.10	13-12..188°00'27"	11.07	3A-3B...116°26'10"	12.47
5A-5X..97°15'17"	56.21	12-11..188°54'58"	29.21	3B-4...96°53'57"	28.05
5X-50..84°23'15"	3.93	11-10..155°13'28"	15.57	4-5X...201°45'39"	17.51
		10-9..192°34'37"	20.87	5X-5A...95°36'55"	56.21
		9-3A..184°07'41"	19.59		
		3A-3..10°53'33"	24.84		

Authenticated By 
 Chief Surveyor
 Surveys Division 16-9-05

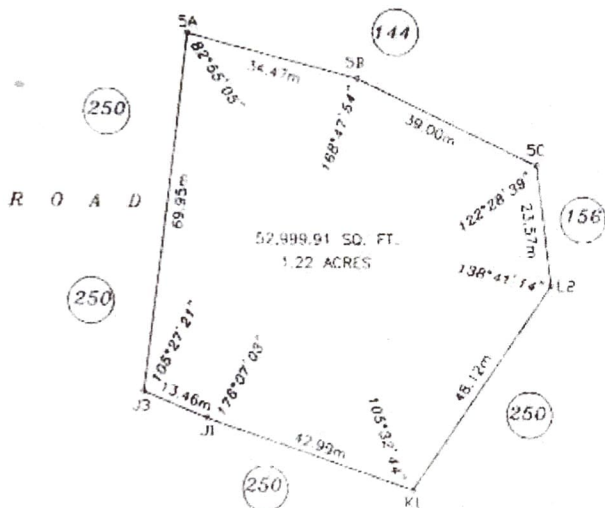
SCALE: 1:1250

 BERTRAND B. BURKE, L.S.
 21 JUNE 2005

SHEET NO.34 2282 A. PARCEL 145

LOCATION: HORSFORD HILL



SCALE: 1:5,000



SCALE: 1:1250

Bertrand B. Burke
BERTRAND B. BURKE, L.S.

20 JUNE, 2005